

## Northeast Modified

Medium to High heat track conditions

## Recommended for:

**Left Rear 13/87-15 and 13/89-15**  
(catalog #14176, 14177, 14189)

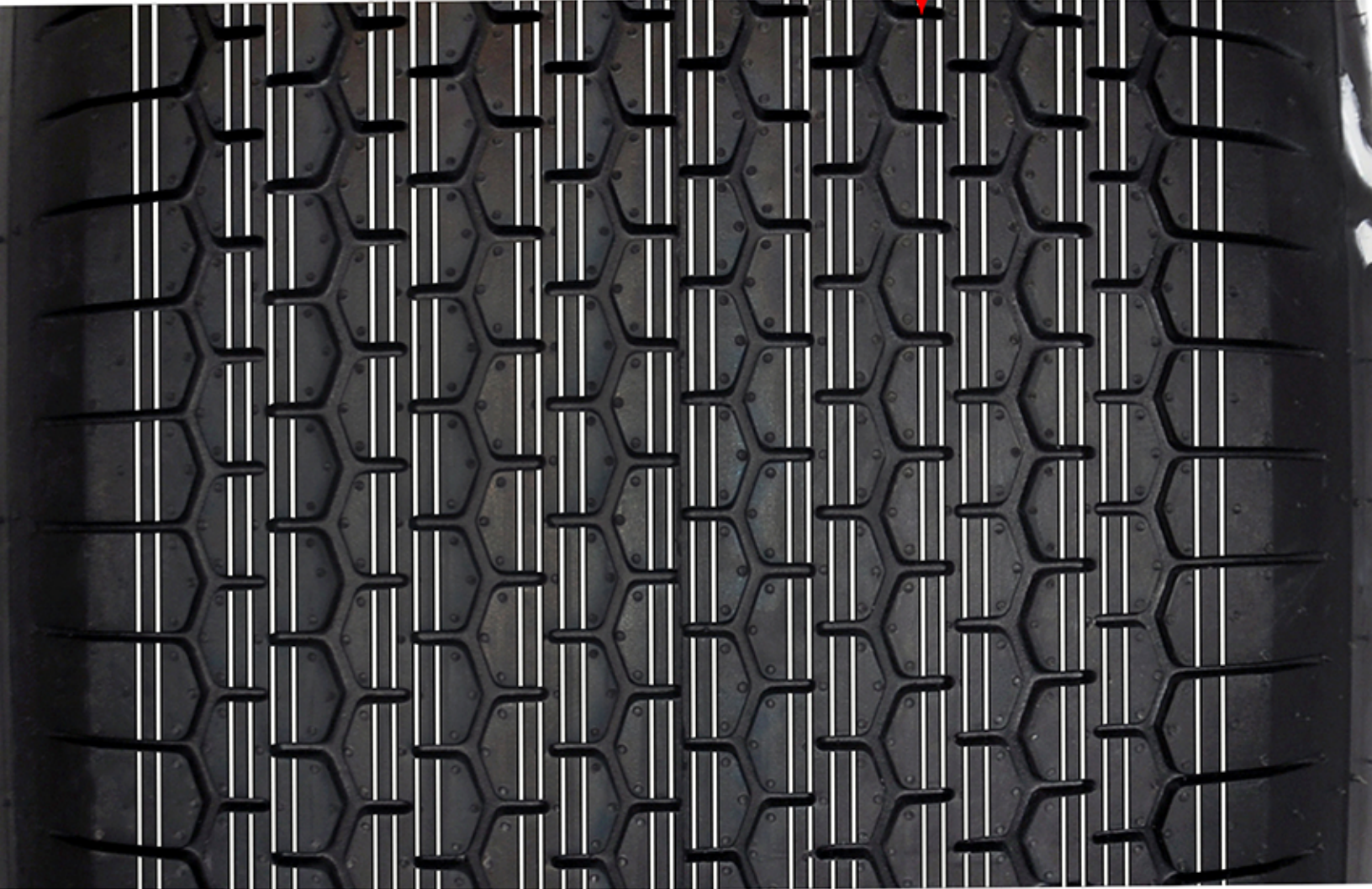
**Right Rear 13/92-15**  
(catalog #14224, 14229)

3/16" to 1/4" is recommended between sipes.

Keep sipes towards the center of the chain links.

(Inside of tire)

(Outside of tire)



### Notes:

- Circumferential sipes help dissipate heat and improve rear sidebite.
- Never sipe more than 1/2 depth. 1/3rd depth of the block, or 3/32nds, is preferred.

Yellow = Groove  
White = Sipe