

Northeast Modified

Very slick, low abrasion,
minimal heat track conditions

Recommended for:

Left Rear 13/87-15 and 13/89-15
(catalog #14176, 14177, 14189)

Right Rear 13/92-15

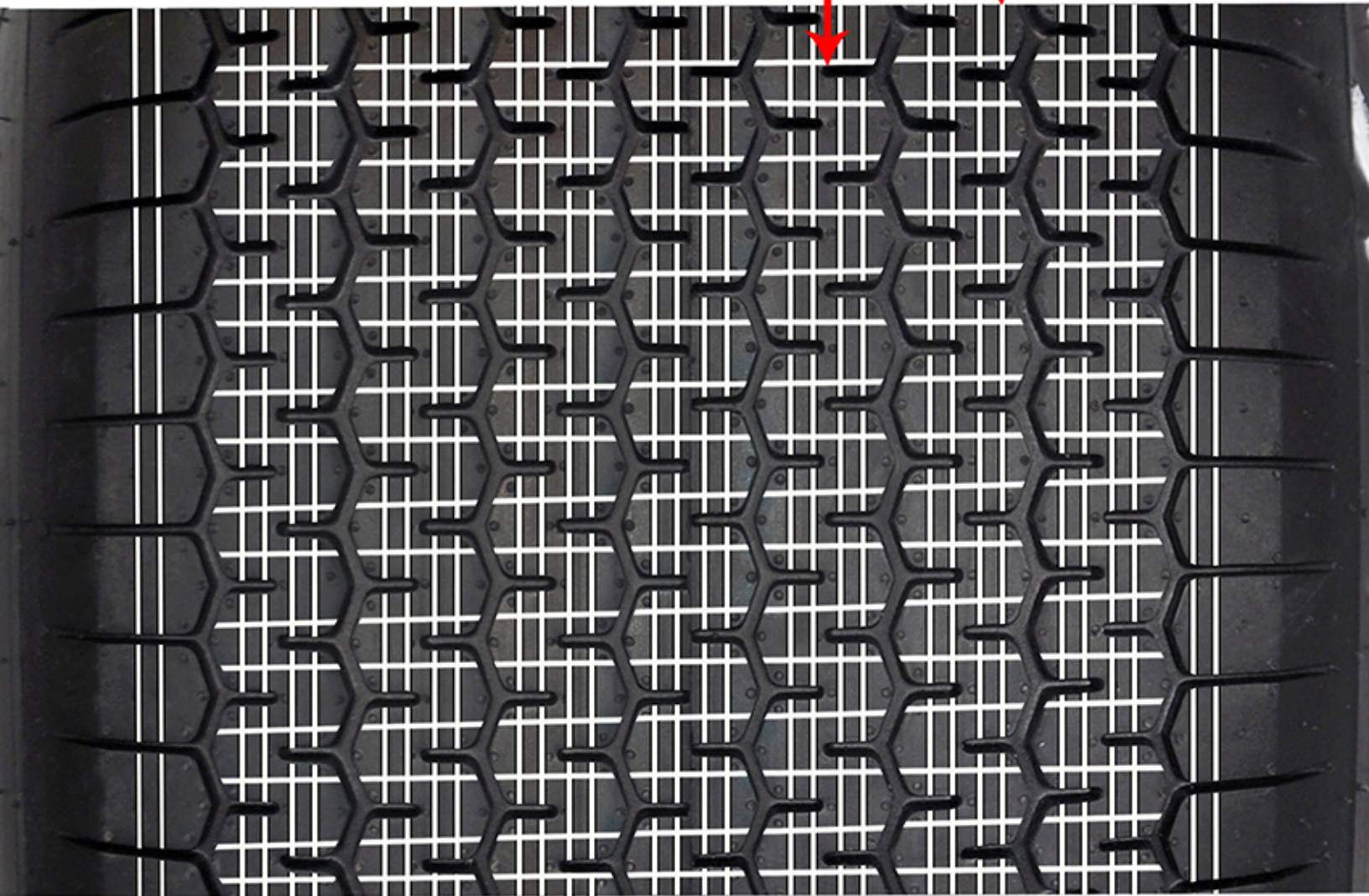
(catalog #14224, 14229)

3/16" to 1/4" is recommended between circumferential sipes.

1/2" is recommended between cross sipes.

(Inside of tire)

(Outside of tire)



Notes:

- Circumferential sipes help dissipate heat and improve rear sidebite.
- Never sipe more than 1/2 depth. 1/3rd depth of the block, or 3/32nds, is preferred.
- Combination of cross and circumferential sipes create heat and edges for traction.

Yellow = Groove
White = Sipe