

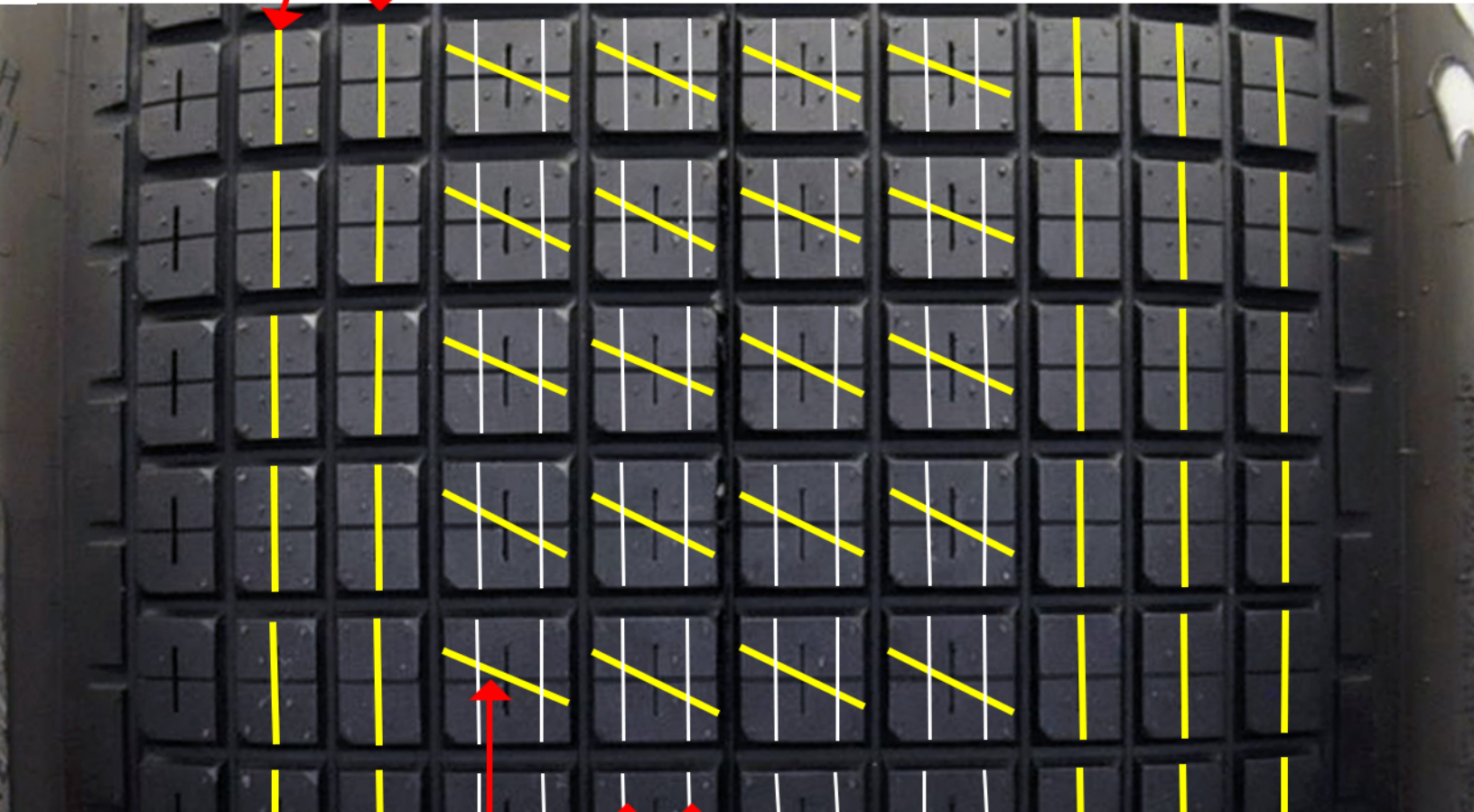
104/16.0-15 38214 RaceSaver

#2 Ideal blade and head is recommended

Narrow circumferential grooves

(Inside of tire)

(Outside of tire)



Slight angle groove helps forward & side-bit
3/4" depth

Narrow circumferential sipes, about half depth.

Narrow circumferential grooves. Improve side-bit
3/4" depth

Notes:

- Circumferential siping and grooving helps dissipate heat. Also helps with sidebite.
- Cross grooving helps with forward bite and removing loose dirt.

Yellow = Groove
White = Sipe